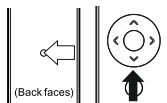
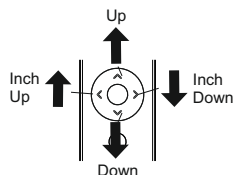
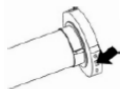


Close Limit Setting



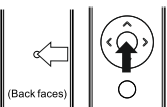
Press the programming button and the Down button simultaneously. The Down button should be pressed gently. The LED on the motor will illuminate and the motor will shunt to acknowledge.

Select the desired position, pressing the Up and Down buttons gently. Function 1 & 2 buttons will "inch" the motor



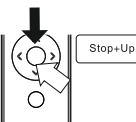
Press the programming button on the rear of the transmitter or the setting button on the motor to store limit

Limit Switch Deleting

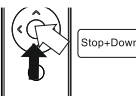


Press the programming button and the Stop button simultaneously. The LED on the motor will briefly illuminate and the motor will shunt to acknowledge all limits have been deleted

Touch Control On / Off - Curtains Only



To turn On the touch control facility press the Stop and Up button simultaneously.



To turn Off the touch control facility press the Stop and Down button simultaneously.

Warranty

This product carries a one year warranty from date of invoice. Damage caused by misuse or disassembly will be excluded from any warranty.

After Sales Support

RAEX UK Ltd.
Europa House, Wharf Road, Burton on Trent, Staffs. DE14 1PZ.
Tel: 01283 536700 Fax: 01283 536777
www.raexmotors.co.uk email: sales@raexmotors.co.uk

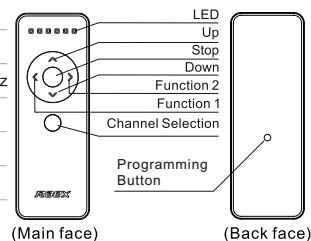
RAEX[®] YR2116

Transmitter Specification



Product specification

Model	YR2116
Transmission range	30meters
Transmission frequency	433.92MHz ± 75KHz
Modulation mode	ASK
Battery	CR2032×1PC
Remote channel	7channels



Functions Of Buttons

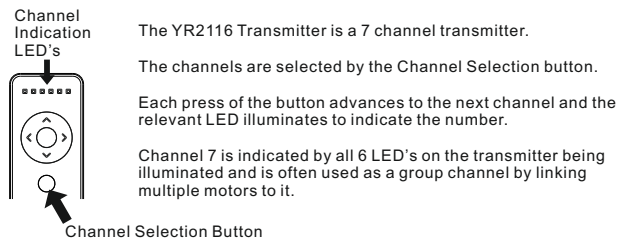
[Up] [Stop] [Down] respectively transmits the command to open, stop & close for the selected channel.

[Channel Selection] is used to scroll through and select channels

[Programming Button] is used to programme transmitter to motor and for setting limits. Please refer to <Remote Control Setting>

[Function 1] & [Function 2] are used as intermediate stop functions for opening and closing curtains, venetian blind tilting and for other systems with the partial open / close functionality. Please refer to product instructions for available functionality.

Channel Selection



For example

Motors 1 to 6 are assigned to channels 1 to 6 respectively and then all 6 are additionally assigned to channel 7. In this scenario the motors can be individually controlled via their respective channels or as a group on channel 7

Remote control setting

Basic remote control setting

Before using the remote control, the user must first link the transmitter to the device to be controlled.

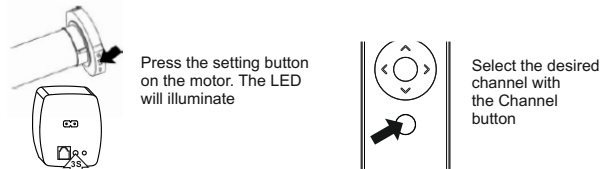
If you make a mistake you can delete a remote channel by following the instructions outlined.

If required the running direction of the motor can be altered <Reverse Motor Direction>

Linking the transmitter to the device

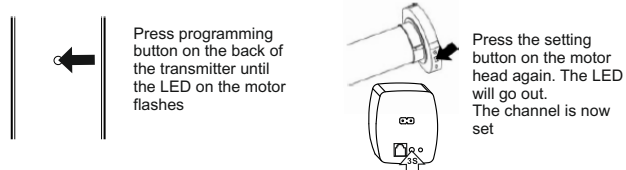
① Put the device in setting mode

② Choose Channel



③ Confirm Channel

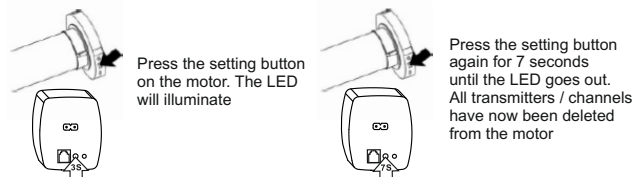
④ Storing Channel



Deleting transmitters from the device

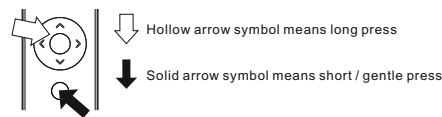
① Put the device in setting mode

② Delete transmitters



Combination functions

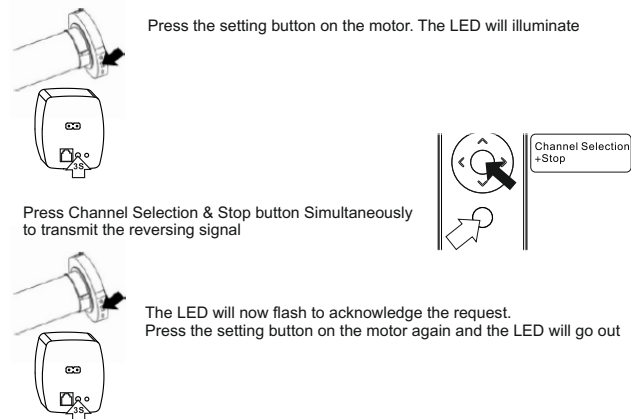
Combination buttons will transmit function signals as below:



Note:

1. Combination buttons are effective on receivers with corresponding functions.
2. Ensure the transmitter is on the required channel
3. The settings may differ between each controlled device. Please refer to individual motor instructions for functionality.

Reverse Motor Direction



Open Limit Setting

